

698~960/1710~2170/2500~2700 MHz Omni-Directional 5 - 8 dBi Swivel Antenna

Model: ANT-120-006

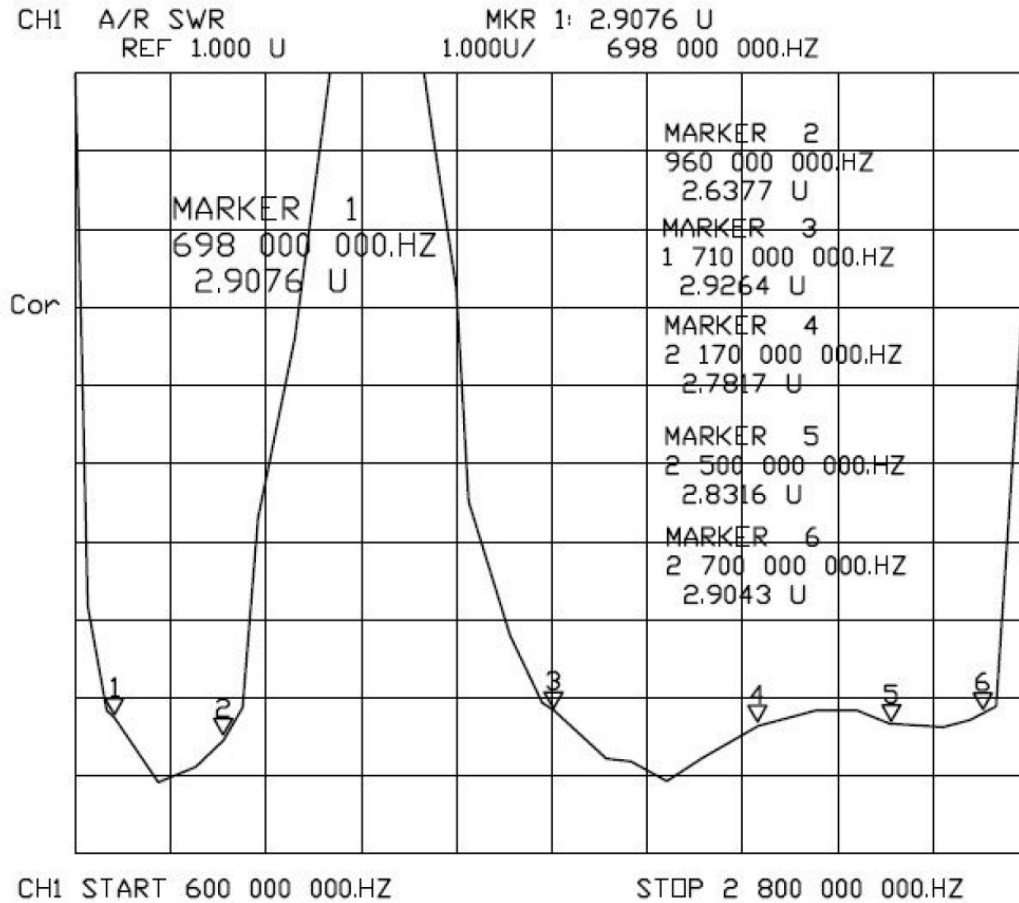


Technical Specifications

Frequency Range	698-960 MHz 1710-2170 MHz 2500-2700 MHz
Gain	5 – 8 dBi depending on frequency
VSWR	≤ 3.0:1
Input Impedance	50 ohm
Polarization Type	Vertical
Max Input power	20 W
Max diameter	.51 inches / 13 mm
Min diameter	.35 inches / 9 mm
Antenna Length	11.25 inches / 285 mm
Material	Polycarbonate / Brass RoHS compliant
Connector Type	SMA Male
Antenna Color	Black
Storage Temperature	-30°C to +75°C

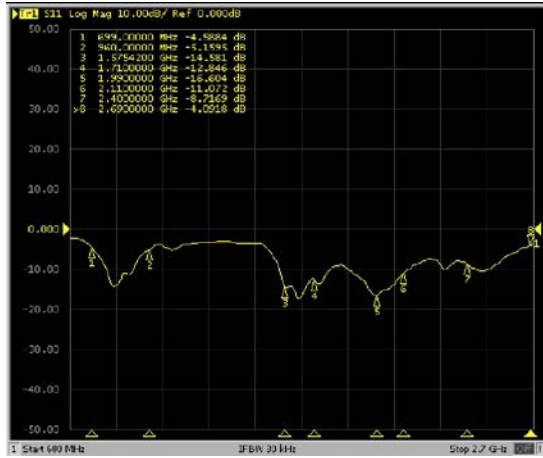
Model: ANT-120-006

Characteristic Curves

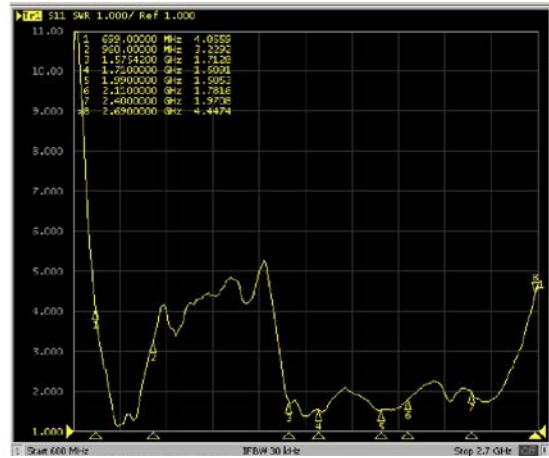


Model: ANT-120-006

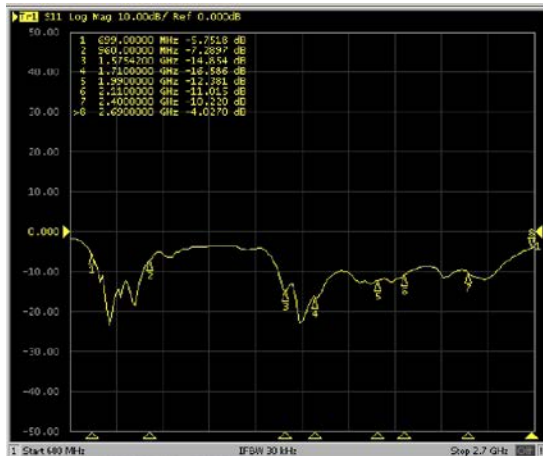
Characteristic Curves



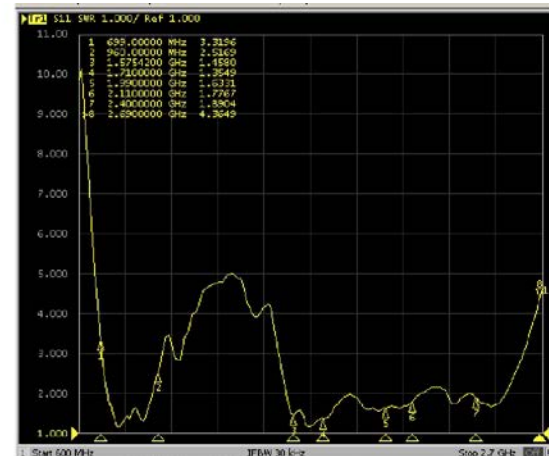
Log Mag at 0deg



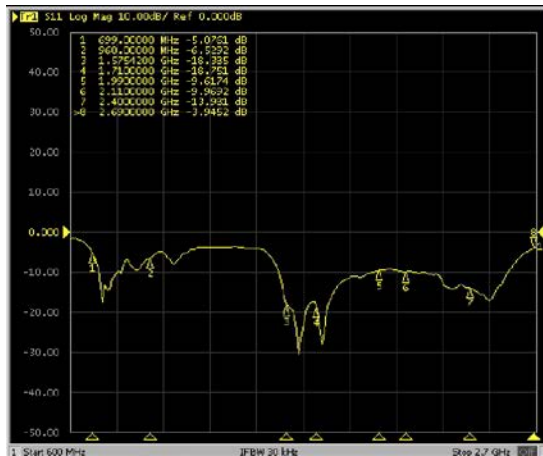
VSWR at 0deg



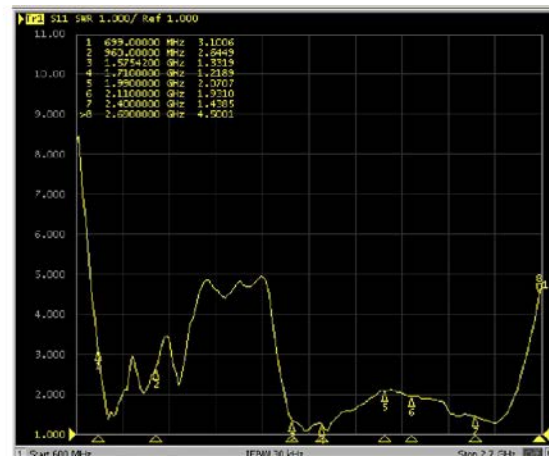
Log Mag at 45deg



VSWR at 45deg



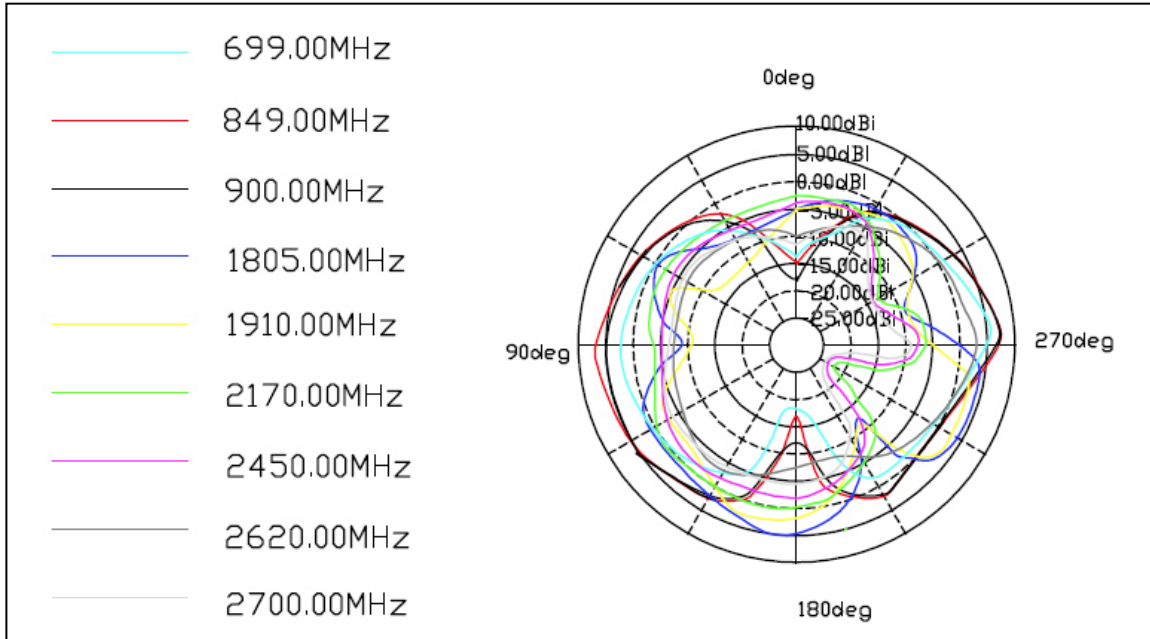
Log Mag at 90deg



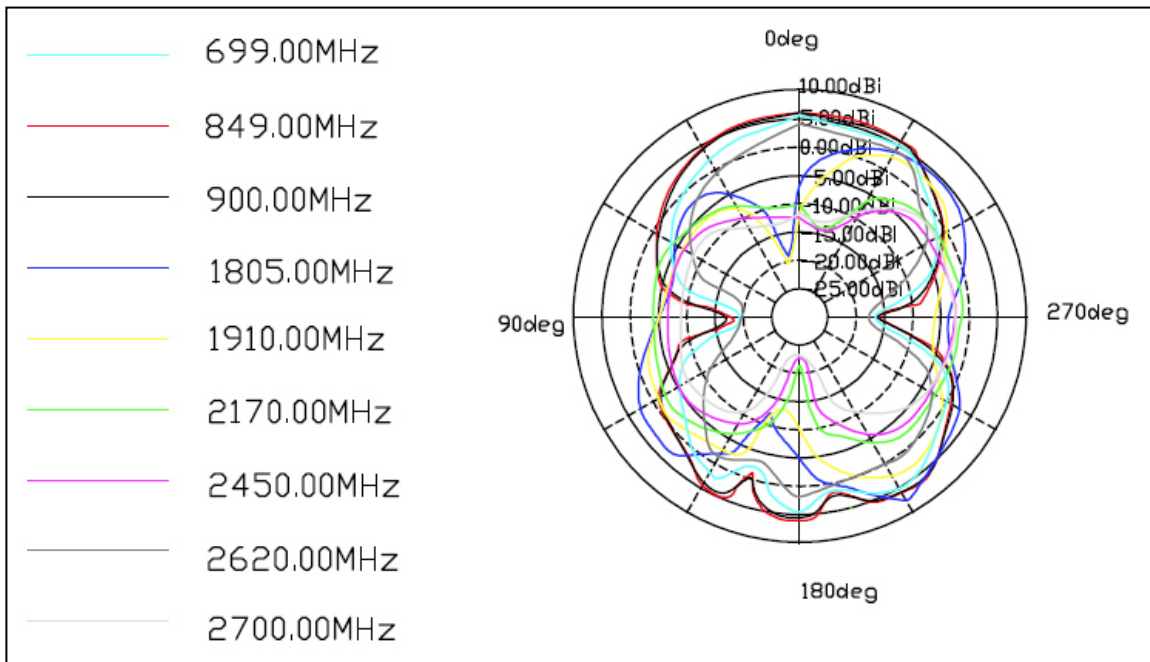
VSWR at 90deg

Model: ANT-120-006

Radiation Pattern



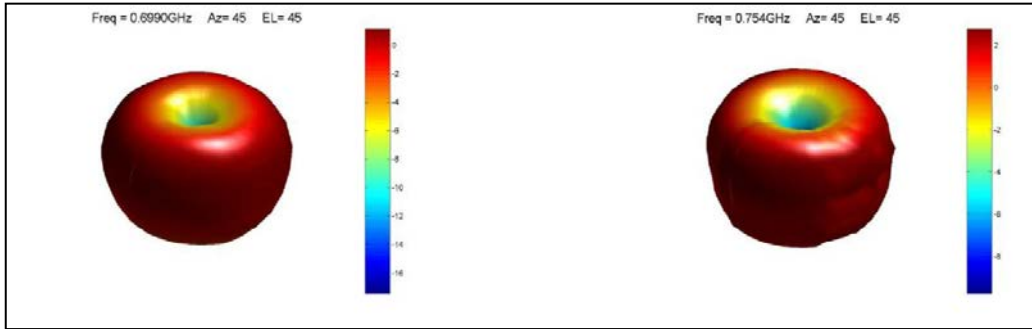
X - Y Plane



X - Z Plane

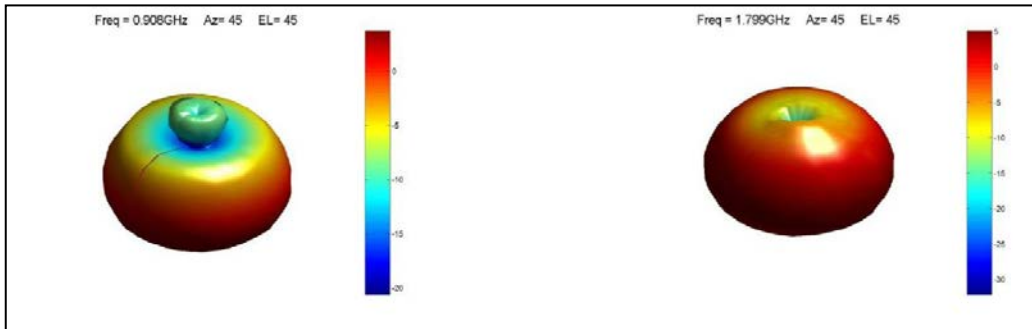
Model: ANT-120-006

Radiation Pattern



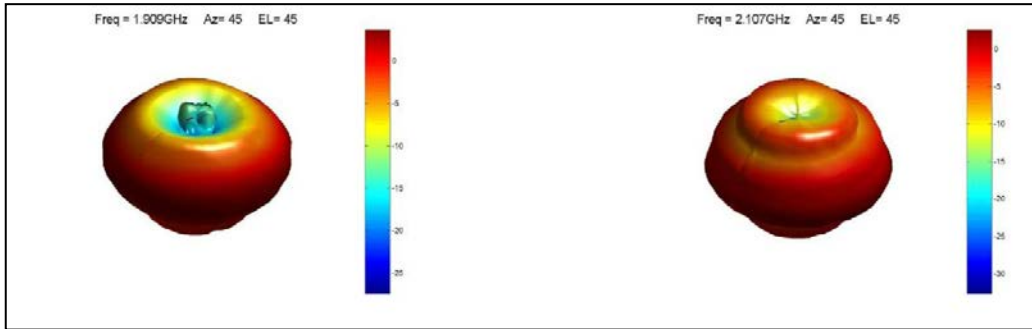
699MHz

750MHz



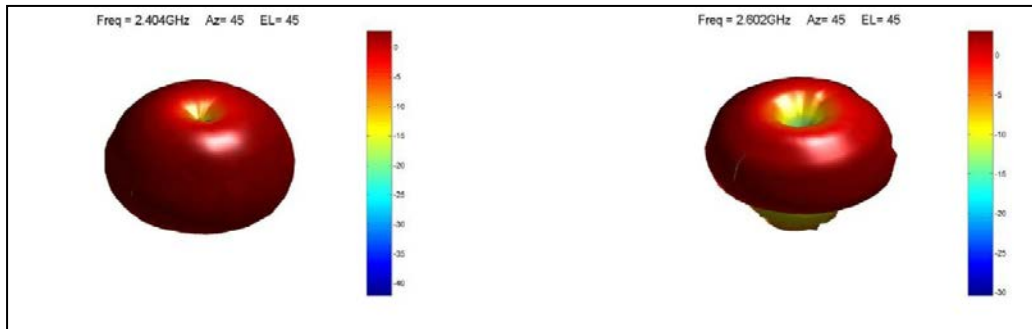
900MHz

1800MHz



1900MHz

2100MHz

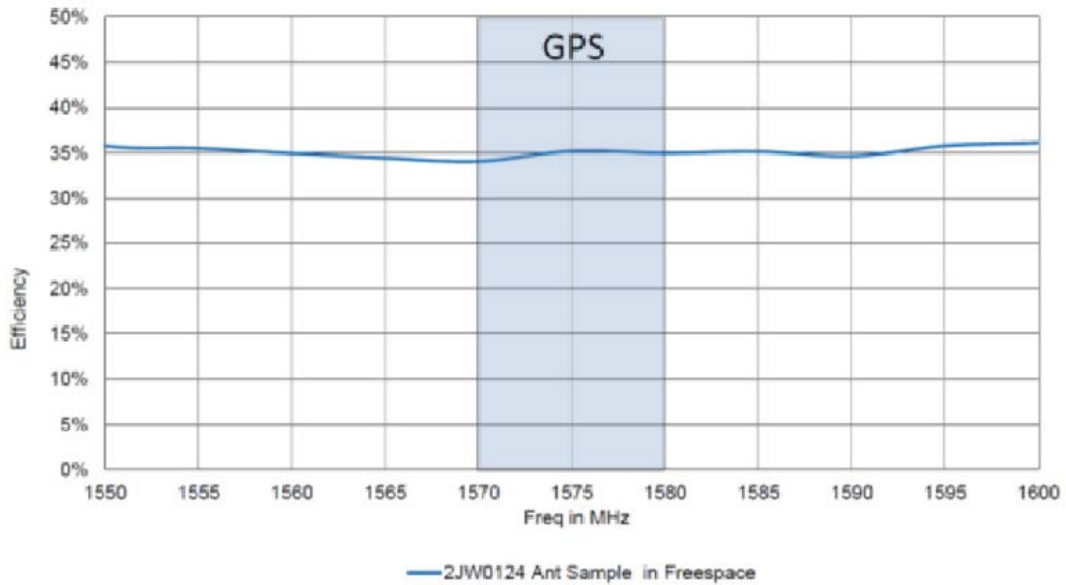
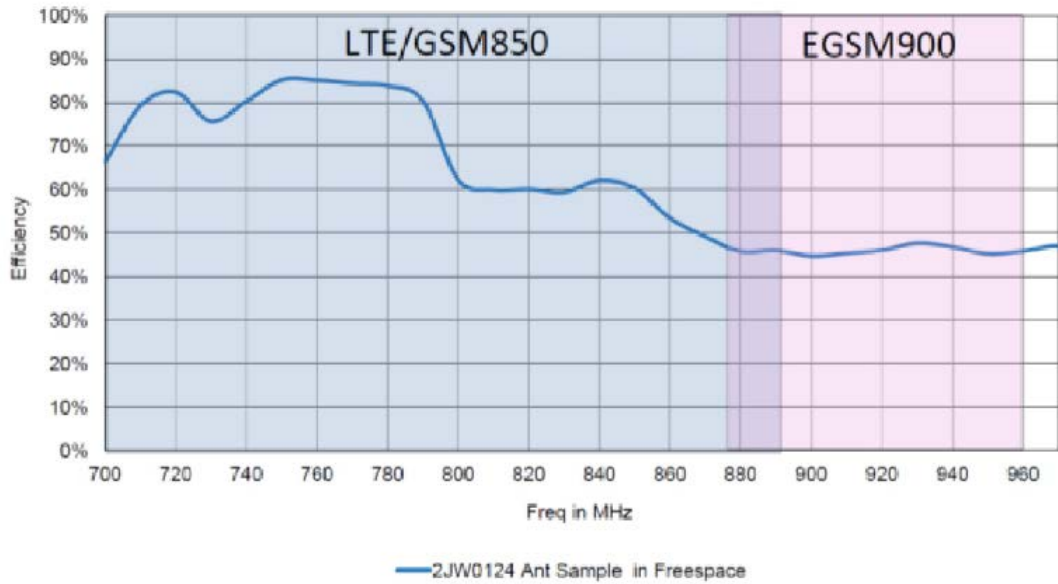


2400MHz

2600MHz

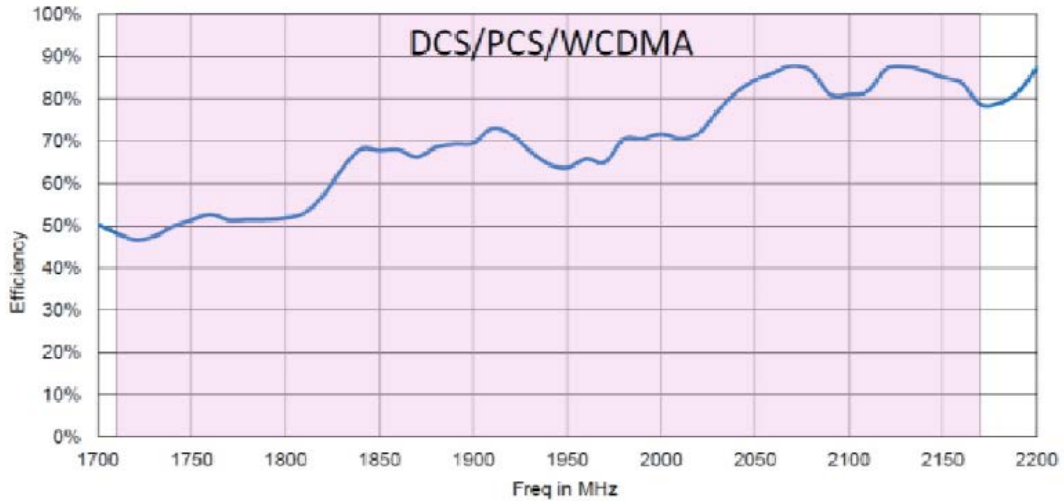
Model: ANT-120-006

Efficiency Curves

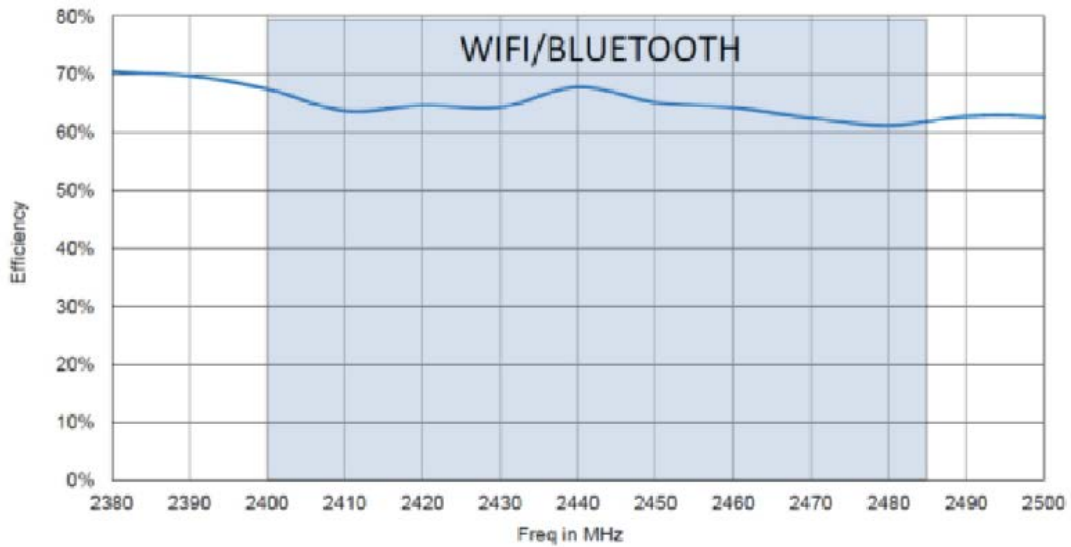


Model: ANT-120-006

Efficiency Curves



— 2JW0124 Ant Sample in Freespace



— 2JW0124 Ant Sample in Freespace

Model: ANT-120-006

Mechanical Specifications (mm)

